

CLASS 411: Turn on Haunches

Level 4: Specialized Riding

Competitor: _____

Division 1: Dressage

Objective: To demonstrate effective, fluid, and balanced front-end isolation from the halt.

Equine: _____

Regulations: Ridden Performance

Date Entered: _____

	<i>BEHAVIOR</i>	<i>POINTS</i>	<i>SCORE</i>	<i>REMARKS</i>
1.	Calm Default <i>The equine remains still and calm, with head forward in a calm default position, the competitor provides C&T from each side of the equine. (Optional: Salute)</i>	10		
2.	Turn On Haunches Left, Bent Left, 180° <i>The equine pivots on their haunches to the left, while maintaining bend to the left, for 180°</i>	10		
3.	Turn On Haunches Right, Bent Right, 180° <i>The equine pivots on their haunches to the right, while maintaining bend to the right, for 180°</i>	10		
4.	Turn On Haunches Left, Bent Right, 180° <i>The equine pivots on their haunches to the left, while maintaining bend to the right, for 180°</i>	10		
5.	Turn On Haunches Right, Bent Left, 180° <i>The equine pivots on their haunches to the right, while maintaining bend to the left, for 180°</i>	10		
6.	Back <i>The equine backs two steps. (Optional: Salute)</i>	10		

Further Remarks

Judge Name: _____ Signature: _____ Date: _____

Total Points: _____ / 60

Percent Score: _____

CLASS 411: Turn on Haunches

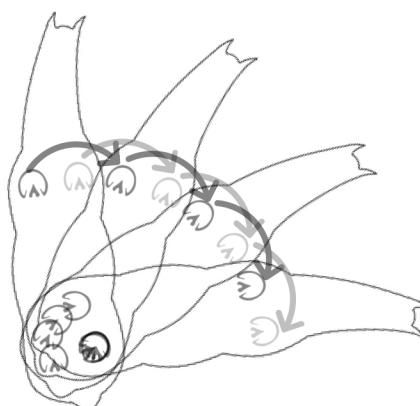
Objective: To demonstrate effective, fluid, and balanced front-end isolation from the halt.

Regulations: Ridden Handling

Turn On Haunches, Toward the Direction of Bend

- When moving **toward** the bend, the **inside hind** remains still or marches in place.
- The equine maintains impulsion (all legs cross in front, the equine's muscles are engaged, the equine is ready to move forward at any point before, during, and after this movement).

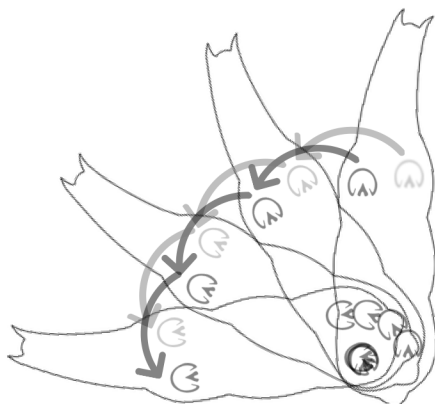
90° Turn Toward the Direction of the Bend



Turn On Haunches, Toward the Direction of Bend

- When moving **away** from the bend, the **outside hind** remains still or marches in place.
- The equine maintains impulsion (all legs cross in front, the equine's muscles are engaged, the equine is ready to move forward at any point before, during, and after this movement).

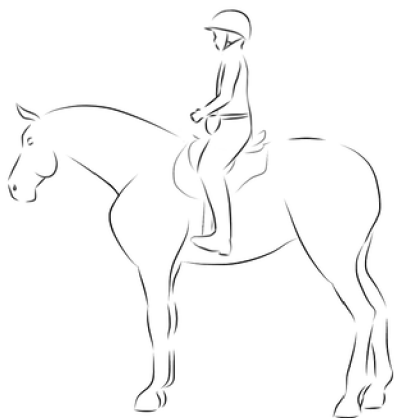
90° Turn Away From Direction of the Bend



Ridden Classes: Calm Default, Backing

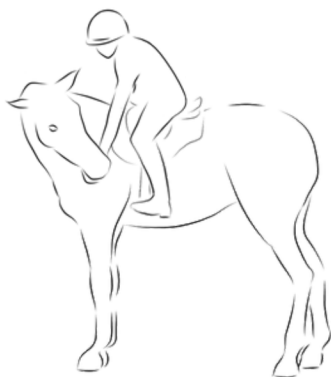
Objective: To demonstrate an effective, solid, and fluid calm default behavior during riding.

Regulations: Ridden Handling



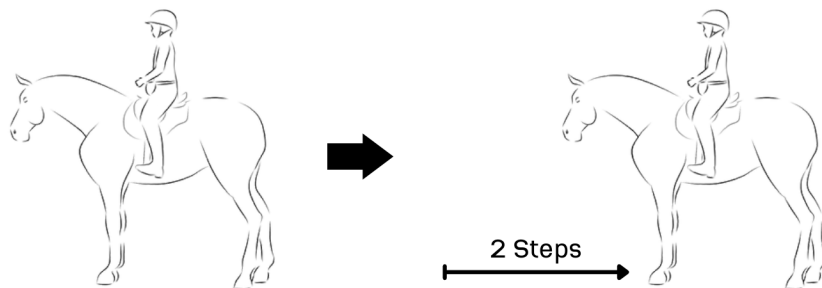
CALM DEFAULT - UNDER SADDLE

While the equine is halted, the handler should remain still and balanced in the saddle. The equine should stand calmly and patiently with their head forward.



REINFORCEMENT - UNDER SADDLE

Remaining balanced in the saddle, the handler delivers reinforcement from either side of the equine. The equine also remains balanced & reaches gently to retrieve reinforcement.



BACK 2 STEPS - UNDER SADDLE

From a balanced and stationary halt, the handler gives a distinct cue and the equine backs two steps, signaling the end of the performance.