

CLASS 311: Turn on Haunches

Level 3: Specialized Liberty

Competitor: _____

Division 1: Dressage

Objective: To demonstrate effective, fluid, and balanced front-end isolation from the halt.

Equine: _____

Regulations: Liberty Performance

Date Entered: _____

	<i>BEHAVIOR</i>	<i>POINTS</i>	<i>SCORE</i>	<i>REMARKS</i>
1.	Calm Default <i>The equine remains still and calm, with head forward or turned away from the competitor, as the competitor moves to stand on the left, right, and front, providing a C&T at each position. (Optional: Salute)</i>	10		
2.	Turn On Haunches Left, Bent Left, 180° <i>The equine pivots on their haunches to the left, while maintaining bend to the left, for 180°</i>	10		
3.	Turn On Haunches Right, Bent Right, 180° <i>The equine pivots on their haunches to the right, while maintaining bend to the right, for 180°</i>	10		
4.	Turn On Haunches Left, Bent Right, 180° <i>The equine pivots on their haunches to the left, while maintaining bend to the right, for 180°</i>	10		
5.	Turn On Haunches Right, Bent Left, 180° <i>The equine pivots on their haunches to the right, while maintaining bend to the left, for 180°</i>	10		
6.	Back <i>The equine backs two steps away from the handler. (Optional: Salute)</i>	10		

Further Remarks

Judge Name: _____ **Signature:** _____ **Date:** _____

Total Points: _____ / 60

Percent Score: _____

CLASS 311: Turn on Haunches

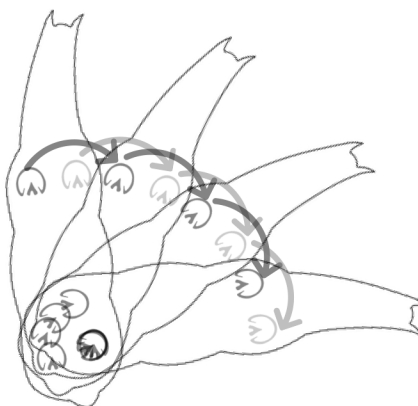
Objective: To demonstrate effective, fluid, and balanced front-end isolation from the halt.

Regulations: Liberty Handling

Turn On Haunches, Toward the Direction of Bend

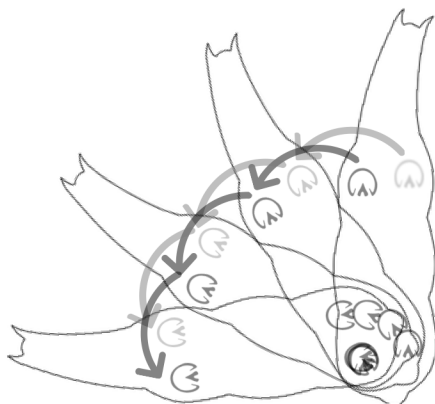
- When moving **toward** the bend, the **inside hind** remains still or marches in place.
- The equine maintains impulsion (all legs cross in front, the equine's muscles are engaged, the equine is ready to move forward at any point before, during, and after this movement).

90° Turn Toward the Direction of the Bend



Turn On Haunches, Toward the Direction of Bend

- When moving **away** from the bend, the **outside hind** remains still or marches in place.
- The equine maintains impulsion (all legs cross in front, the equine's muscles are engaged, the equine is ready to move forward at any point before, during, and after this movement).

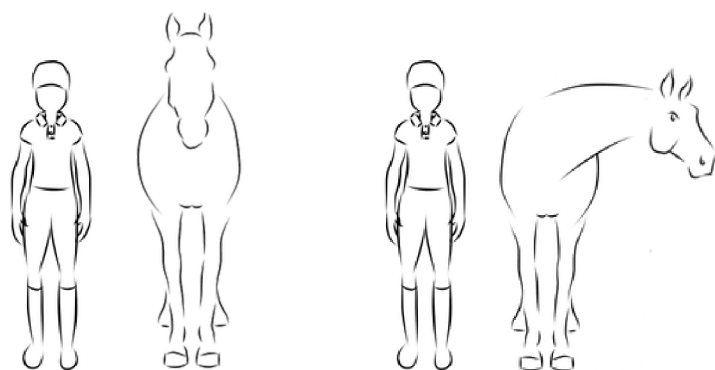


90° Turn Away From Direction of the Bend

Liberty Classes: Calm Default, Backing

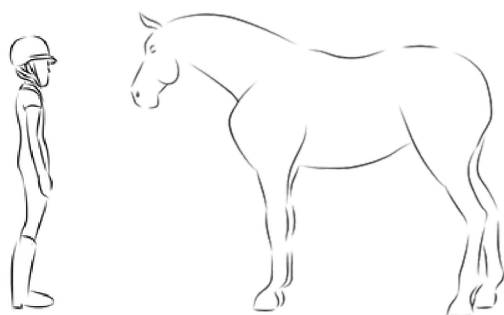
Objective: To demonstrate an effective, solid, and fluid calm default behavior at liberty.

Regulations: Liberty Handling



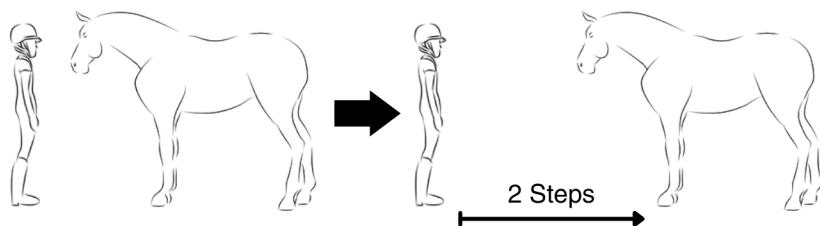
CALM DEFAULT - SIDE

From either side of the equine, the handler should stand still (vocal or stationary body language cues permitted). The equine should stand calmly and patiently with their head forward or away from the handler, ideally with a low headset (poll below the wither)



CALM DEFAULT - FRONT

From the front of the equine, the handler should stand still (vocal or stationary body language cues permitted). The equine should stand calmly and patiently with their head down or away from the handler, ideally with a low headset (poll below the wither)



BACK AWAY, 2 STEPS

From the front of the equine, the handler gives their cue. The equine backs two steps away from the handler, who must remain stationary during backing.