

# CLASS 335: Carrying Obstacles

**Level 3:** Specialized Liberty

**Competitor:** \_\_\_\_\_

**Division 3:** Trail

**Objective:** To demonstrate effective communication and maneuvering while carrying obstacles.

**Equine:** \_\_\_\_\_

**Regulations:** Liberty Performance, Trail Arena

**Date Entered:** \_\_\_\_\_

	BEHAVIOR	POINTS	SCORE	REMARKS
1.	<b>Calm Default</b> <i>The equine remains still and calm, with head forward or turned away from the competitor, as the competitor moves to stand on the left, right, and front, providing a C&amp;T at each position.</i>	10		
2.	<b>Place Carried Object</b> <i>The equine stands stationary as an object that is 5-10% of the equine's body weight is placed over their back.</i>	10		
3.	<b>Carry Object, Straight Line</b> <i>The equine carries the object, walking forward in a straight line for at least 10 meters (30 feet)</i>	10		
4.	<b>Carry Object, Turning</b> <i>The equine carries the object for a full circle each direction (in a "figure-8" shape). Circles should be 5-20 meters in diameter.</i>	10		
5.	<b>Remove Carried Object</b> <i>The equine stands stationary as the object is removed from their back.</i>	10		
6.	<b>Back</b> <i>After pausing in a calm default position, the equine backs two steps away from the handler.</i>	10		

**Further Remarks**

Judge Name: \_\_\_\_\_ Signature: \_\_\_\_\_ Date: \_\_\_\_\_

Total Points: \_\_\_\_\_ / 60

Percent Score: \_\_\_\_\_

# CLASS 335: Carrying Obstacles

**Objective:** To demonstrate effective communication and maneuvering while carrying obstacles.

**Equipment:** Liberty Performance

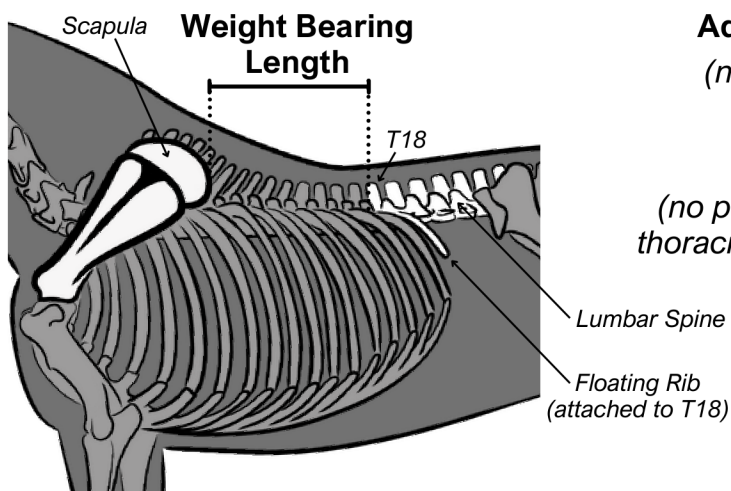
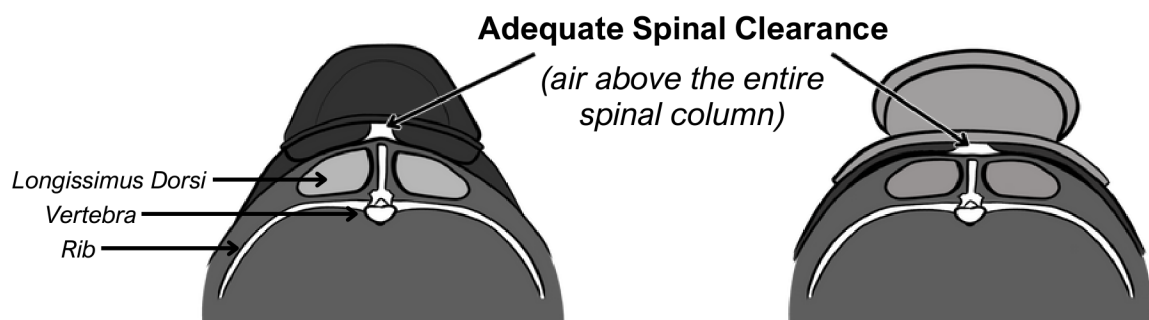
**Arena:** Trail Arena

**Trail obstacles may be built or designed in a variety of ways.** Contact TECS to confirm whether your obstacle/equipment meets TECS standards/requirements.

- Carried Objects should be 5-10% of the equine's body weight.
- TECS recommends using a feed bag or weighted saddlebags for this obstacle.
- Carried Objects may come in any shape or size, but must be able to be secured within the equine's weight-bearing area.

**Back protection is required for equines carrying objects.** Back protection should provide a protective barrier between the equine's back and the carried object. TECS encourages competitors to utilize padded and shock-absorbing materials.

**Back protection must allow freedom of movement.** This includes:



**Adequate Shoulder Clearance**

(no pressure on nor movement restriction of the scapula)

**No Weight on the Lumbar**

(no pressure distributed past the 18th thoracic vertebrae/on the lumbar region)

**Back protection should be smooth, fit flush with the equine's anatomy, and distribute all pressure evenly throughout the equine's weight-bearing area.** Well-fitted trees are permitted, but not required. Treeless options must still distribute pressure adequately and provide adequate clearance/freedom of movement.

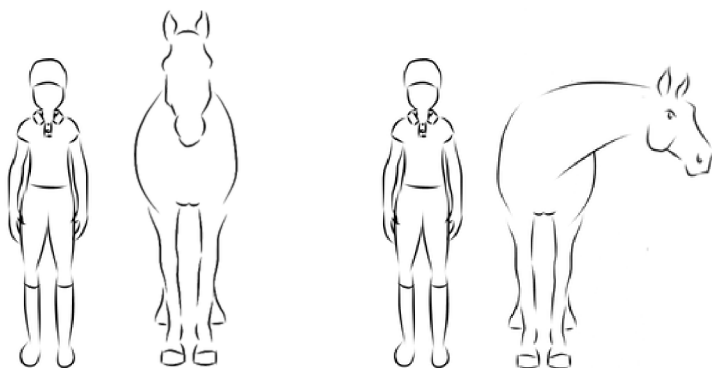
The surface against the equine's skin should be **softer** than the equine's back muscles.

See the **Rules & Regulations** for more information on back protection.

# Liberty Classes: Calm Default, Backing

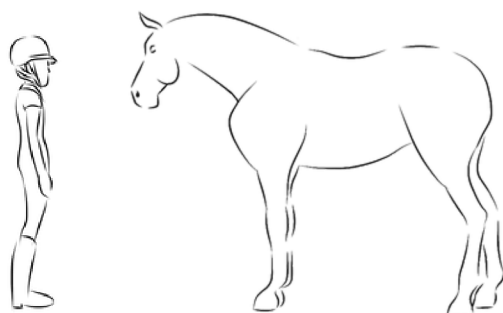
**Objective:** To demonstrate an effective, solid, and fluid calm default behavior at liberty.

**Regulations:** Liberty Handling



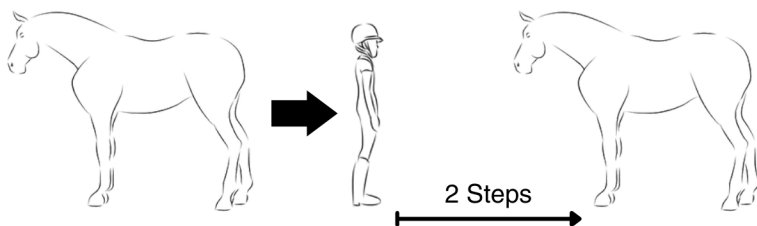
**CALM DEFAULT - SIDE**

From either side of the equine, the handler should stand still (vocal or stationary body language cues permitted). The equine should stand calmly and patiently with their head forward or away from the handler, ideally with a low headset (poll below the wither)



**CALM DEFAULT - FRONT**

From the front of the equine, the handler should stand still (vocal or stationary body language cues permitted). The equine should stand calmly and patiently with their head down or away from the handler, ideally with a low headset (poll below the wither)



**BACK AWAY, 2 STEPS**

From the front of the equine, the handler gives their cue. The equine backs two steps away from the handler, who must remain stationary during backing.